



CEREC Precision of Fit

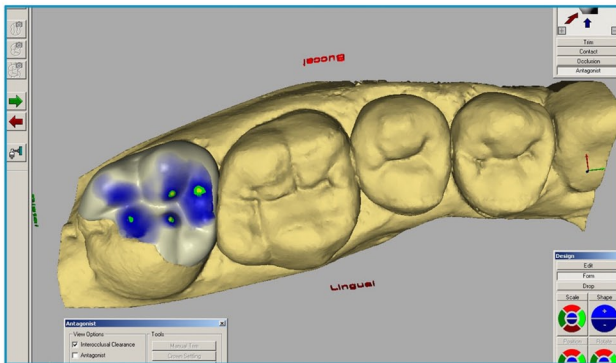


Figure 5. Virtual designed restorations with the CEREC software. Note the ability to precisely place occlusal contacts.



Figure 6. Milled, stained and glazed TriLux ceramics ready for bonding.



Figure 7. Try-in of TriLux ceramics prior to bonding. Note the accuracy of dry restoration fit.



Figure 8. Occlusal view of metal-free restorations at 1 week demonstrates the precision and blend of CAD/CAM technologies.